



Mounting instructions

OSPW X SRAM Transmission
XX SL, XX, X0

ceramicspeed X

TOOLS FOR REPLACEMENT:



3mm Tamper Allen key bit



Chain tool



Torque wrenches covering (1,5Nm, 4,5Nm)



SRAM setup Guide (APP)



6MM, 8MM Allen key

Maintenance

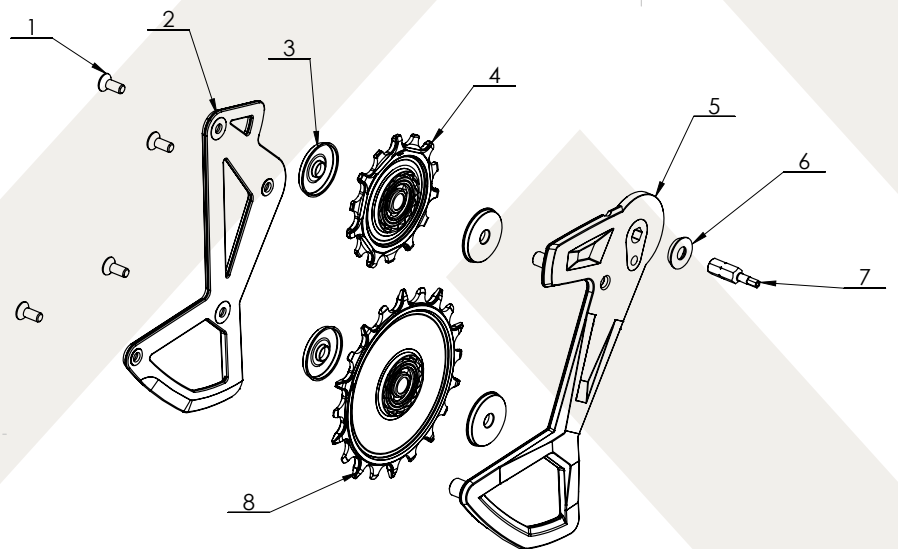
Maintenance of the bearings should occur at least one to two times per year, every 5.000 km/3.000 miles in normal conditions, or every 3.000 km/1.800 miles in extreme or harsh conditions. Remove the back side cage plate & both pulleys to clean all components thoroughly.

With the ADR shields removed, carefully remove the bearing seals and flush the bearings following the UFO Bearing Cleaner instructions.

Apply a few drops of UFO Pulley Oil and reinstall the pulley seals. Take careful note of the rotation direction of the pulleys with ADR when reinstalling into the cage.

The cage tower bolts are torqued to 1,5Nm

POS	Description
1	Cage bolts
2	Back cage plate
3	Stainless steel ADR Dust shield
4	14T Upper ALPHA Disc
5	Front cage plate
6	Countersink washer
7	3mm tamperproof bit
8	20T Lower ALPHA Disc



DO NOT REMOVE THE CAGE + CLUTCH ASSEMBLY FROM THE DERAILLIUER HOUSING FOR THIS PROCEDURE!



Remove the chain

Remove the rear wheel. Shift the derailleur up so that the cage can rotate past the body and chainstay.

You can reuse the same chain length.



Removal of the stock cage:

Lock the cage in place by using the cage lock. (A)

Unscrew stop bolt (B) using the included 3mm tamper bolt bit, found under the packaging insert in the box.

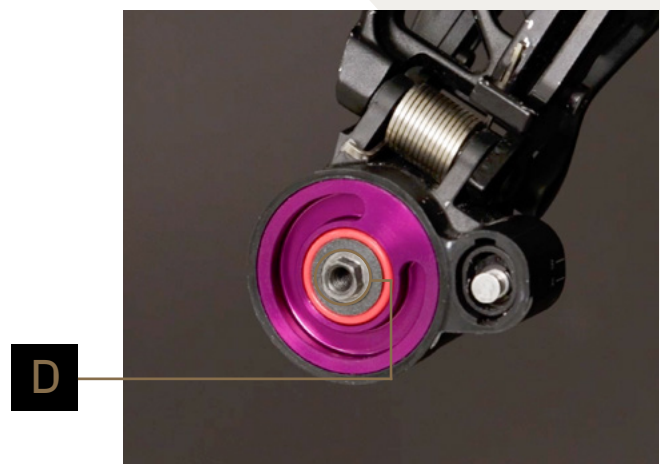
Hold the cage securely and release the cage lock to unwind the spring tension (A)



Once the spring tension is released, unscrew the main cage bolt (C) using the 3mm tamper bolt bit, to remove the cage from the clutch assembly and the derailleur housing. The clutch assembly remains inside the derailleur.



Make sure the red O-ring stays in place on the clutch assembly (D)

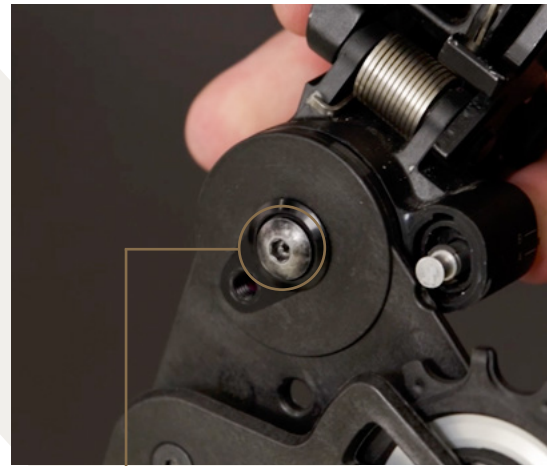


Install the OSPW X:

For XX SL derailleurs, reinstall the main cage bolt and original washer (C)

For XX, XO, and GX derailleurs, use the original installation bolt along with the CeramicSpeed supplied silver washer.

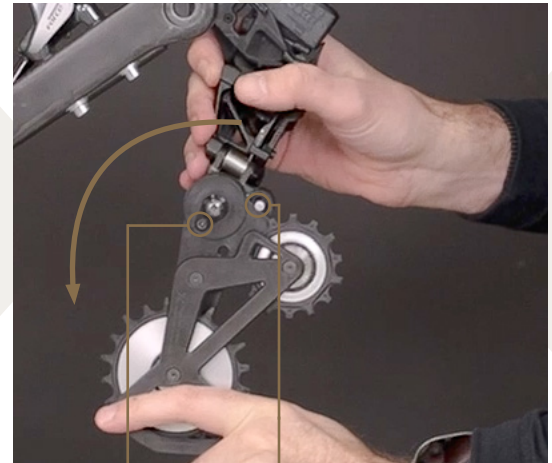
Tighten to 4,5Nm



C

Rewind the spring tension by rotating the OSPW X cage counterclockwise (following the direction arrow on the cage) until you can lock the cage using the cage lock (A)

Re install stop bolt (B) tighten to 4,5Nm



B

A

Carefully release the cage lock.

The cage should rotate smoothly, with even pressure forward, and a firm quick spring backwards.



Re install the chain

<https://axs.sram.com/guides/chain/calculator>



Set B-Tension and chain length by following the SRAM Transmission manual on SRAM's Website or the SRAM APP*

Once the chain is installed, ensure alignment trim is set correctly and you are ready to go ride.

There is no implied or otherwise suggested compatibility by SRAM regarding exchanging the of derailleur cage.

CERAMICSPEED X