



160E DECAL PROTECTOR KIT PLACEMENT INSTRUCTIONS



160E DECAL PROTECTOR KIT PLACEMENT INSTRUCTIONS

WHAT YOU NEED TO GET STARTED INSTRUCTIONS

- LINT FREE RAG
- SPRAY BOTTLE WITH SOAP
- HAIR DRY/ HEAT GUN
- CLEAN BIKE
- CLEAN HANDS
- MEASURING DEVICE

1. Clean bike thoroughly with mild soap and water prior to decal application. It is best if you can apply decals on a new frame.
2. Wash hands before application or wear a pair of nitrile/latex gloves to keep any dirt from sticking to the decal.
3. Get a spray bottle full of water. Add a drop or two of soap to help the decals slide around if needed.
- 4) Working with one decal at a time, spray the appropriate area of the frame and adhesive-side of the decal.
5. Place decal in the locations provided below, re-placing or sliding decal as needed.
6. Once the decal is in the right spot, use the provided squeegee to start flattening the decal onto the frame. Start in the middle, working along the middle length. Gradually squeeze out the water toward the edges, working thoroughly and patiently to remove ALL water under the decal.

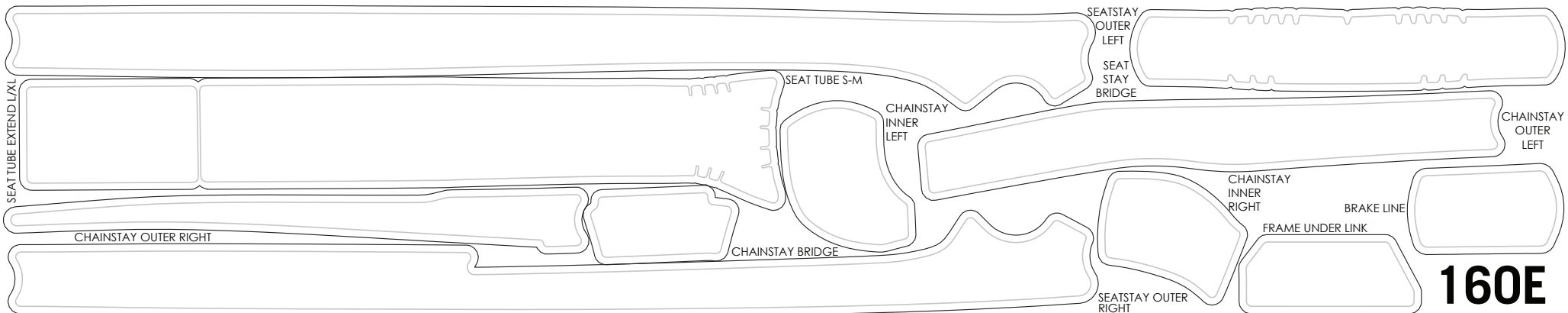
7. Use a clean cloth or towel to help lay the decal flat and wipe off excess water. At this point, some edges of the decals might not be perfectly flat on the frame.

8. Using a heat gun or hairdryer on LOW setting, apply heat to the decal edges for 2-3 seconds at a time. Using a clean rag or squeegee, work on any edges or bumps to lay them flush to the frame. Re-apply heat and repeat as necessary.

9. When it's time to remove or replace your protective decals, use a heat gun to warm up adhesive and pull back decal slowly. Do not remove without warming up decal adhesive first. Clean off any residual adhesive with mild soap and water.

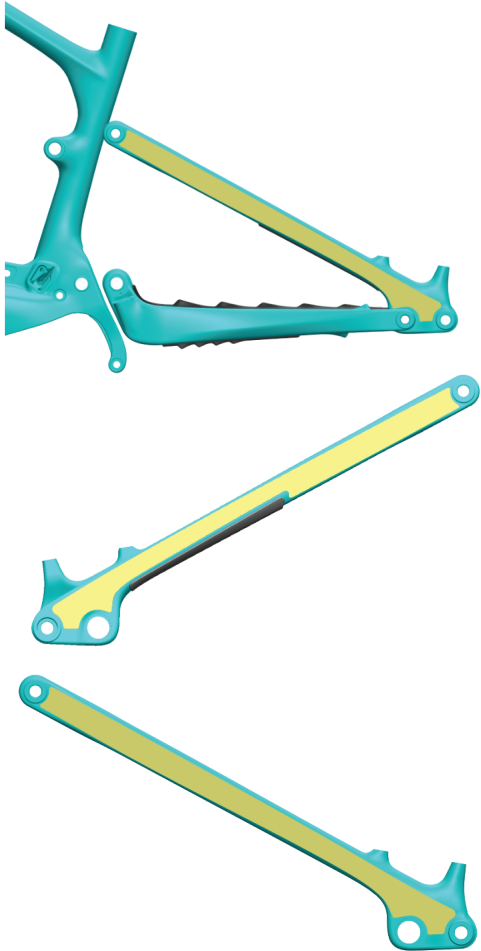
NOTE:

Feel free to cut out any custom shapes you might want using the remaining decal scraps. Get creative!



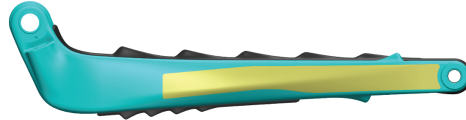
SEAT STAY OUTERS

Apply Seat Stay Protectors as shown so the curves at end of decals line up with seat stay pivots.



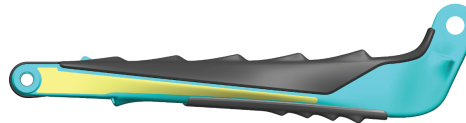
CHAIN STAY OUTERS

(Left) Place the CS Outer Left Decal as shown, lining up the rear edges of the decal with the axle.



OUTER LEFT

(Right) Place the CS Outer Right Decal as shown such that it fits within the rubber swingarm protectors and the rear edges of the decal line up with the axle.



OUTER RIGHT

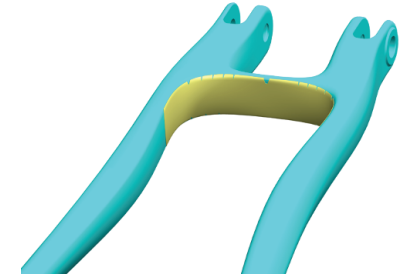
FRAME UNDERLINK

Place the protector on the front triangle under the chainstay, lining up the decal lower edge with the frame.



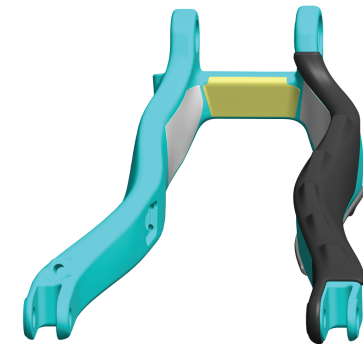
SEATSTAY BRIDGE

Place the Seat Stay Bridge protector so it wraps to the top and bottom surfaces of the Seatstay beginning in the center. Note the decal has a notch indicating the center top of the decal.



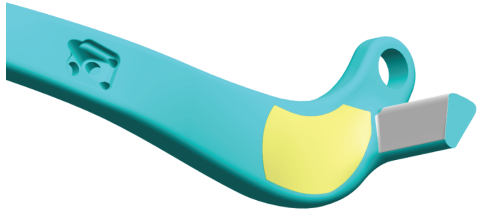
CHAINSTAY BRIDGE

Apply the Chain Stay Bridge Protector so the center surface wraps over the top surface as shown.

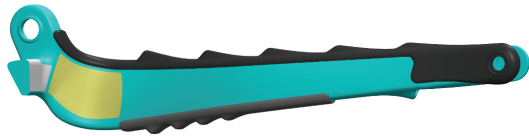


CHAINSTAY INNER PROTECTORS

(Left) Place the CS Inner Left decal as shown, lining up the edges of this decal and the CS Bridge Decal.

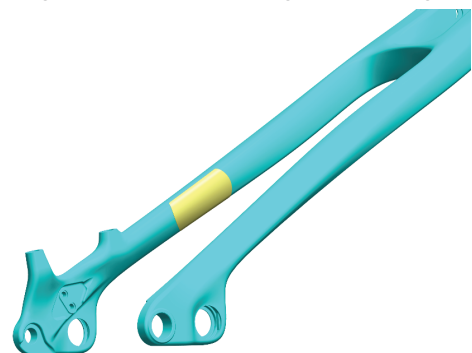


(Right) Place the CS Inner Right Decal as shown such that it lines up with the CS Bridge Decal and fits within the rubber swingarm protectors.



BRAKE LINE

Place the protector to prevent contact between the frame and brake line. Depending on your brake system, this may be on the chainstay or seatstay.



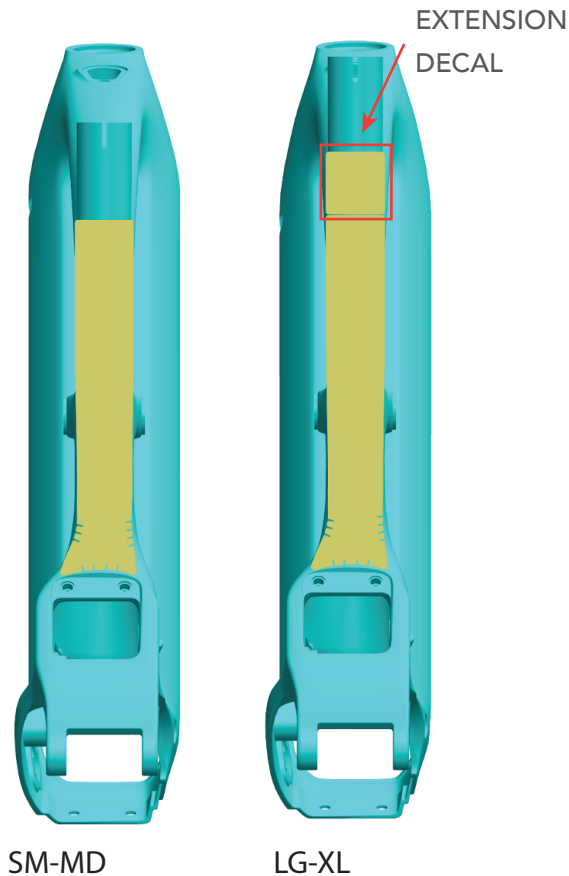
SEAT TUBE

SM-MD:

Place the decal on the back of the seat tube, centering it on the tube and lining up the bottom with the fender cutout.

LG-XL:

For size L and XL, place the extension decal directly on top of the ST decal, lining up bottom edges.



DECAL REMOVAL

When it's time to remove or replace your protective decals, use a heat gun to warm up adhesive and pull back decal slowly. Do not remove without warming up decal adhesive first. Clean off any residual adhesive with mild soap and water.

NOW THAT YOUR BIKE IS CLEAN AND PROTECTED, GO OUT AND GET IT DIRTY!

If you have any questions related to your protector decals or any other part of your bike please feel free to drop us a line any time. We are always happy to help!

Contact us at:

yeticycles.com/support

service@yeticycles.com

YETI CYCLES

621 Corporate Circle, Unit B Golden, CO 80401
(p) 303-278-6909

BUSINESS HOURS:

Monday-Friday
8AM-11:30AM, 1:00PM-5:30PM (Mountain Time)