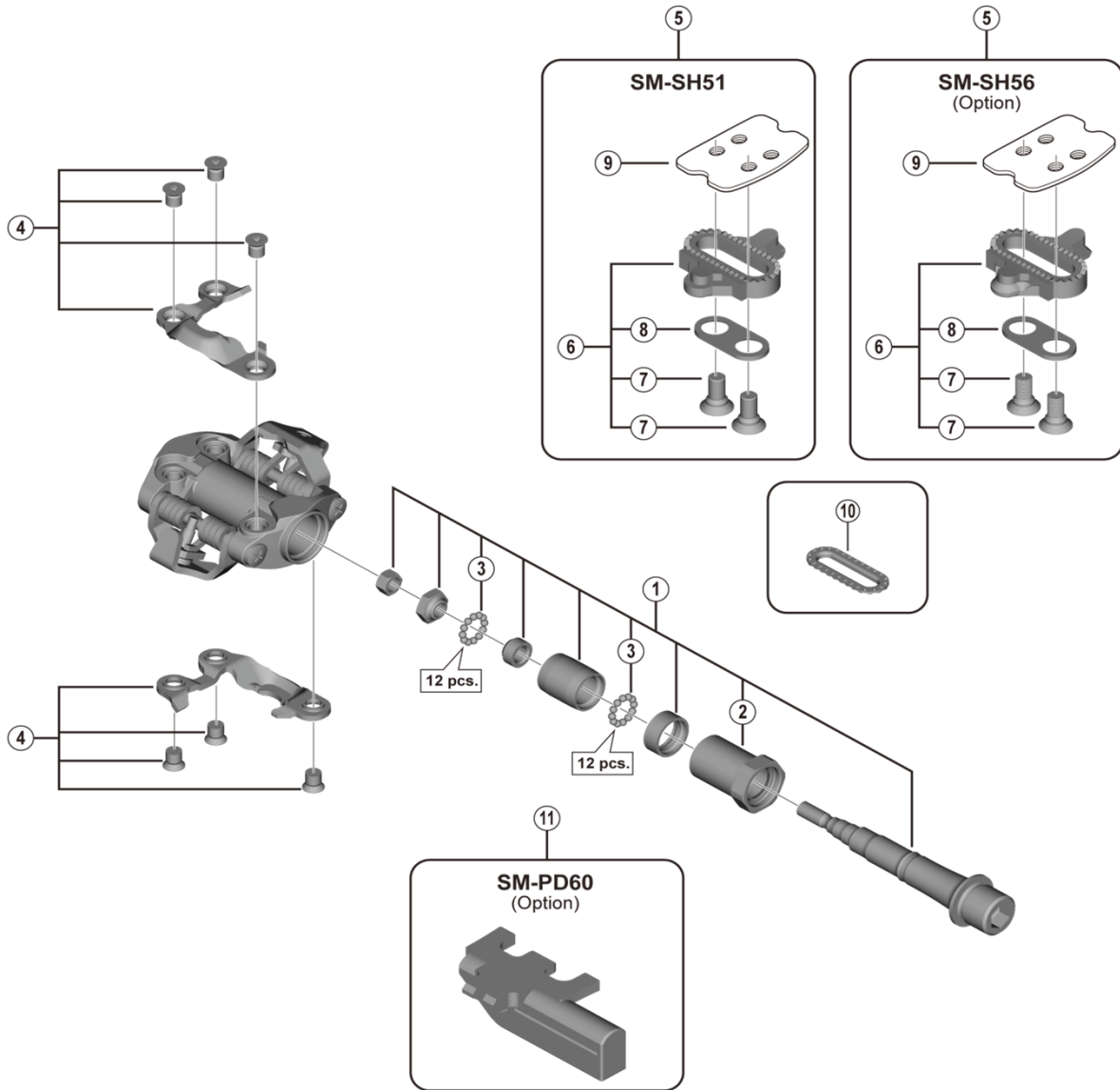


DEORE XT SPD Pedals PD-M8100



ITEM NO.	SHIMANO CODE NO.	DESCRIPTION	INTERCHANGEABILITY		
			PD-M8000	PD-M8020	PD-M8120
1	YL8K98010	Pedal Axle Assembly (Right / B.C.9/16" x 20T.P.I.)			
	YL8K98020	Pedal Axle Assembly (Left / B.C.9/16" x 20T.P.I.)			
2	YL8K98030	Lock Bush (Right)			
	YL8K98040	Lock Bush (Left)			
3	Y41N98030	Steel Ball (3/32") 62 pcs.	A	A	A
4	YL8J98030	Body Cover (Right) & Fixing Bolts (M5)	A	B	B
	YL8J98040	Body Cover (Left) & Fixing Bolts (M5)	A	B	B
5	Y42498220	SM-SH51 Cleat Set (Single Release Mode / Pair)	A	A	A
	Y41S98092	SM-SH56 Cleat Set (Multiple Release Mode / Pair)	A	A	A
6	Y42498201	SM-SH51 Cleat Set w/o Cleat Nut (Single Release Mode / Pair)	A	A	A
	Y41S98100	SM-SH56 Cleat Set w/o Cleat Nut (Multiple Release Mode / Pair)	A	A	A
7	Y41704030	Cleat Fixing Bolt (1 pc.)	A	A	A
8	Y42423000	Cleat Adapter (1 pc.)	A	A	A
9	YL0E04000	Cleat Nut (1 pc.)	A	A	A
10	YL8098030	SPD Cleat Spacer (2 pcs.)	A	A	A
11	Y40Z98010	SM-PD60 Reflector Unit Standard/AS(Pair/Option)	A	A	A

A: Same parts.

B: Parts are usable, but differ in materials, appearance, finish, size, etc.

Absence of mark indicates non-interchangeability.

Specifications are subject to change without notice.

Jun.-2019-4514

© Shimano Inc. I

SHIMANO