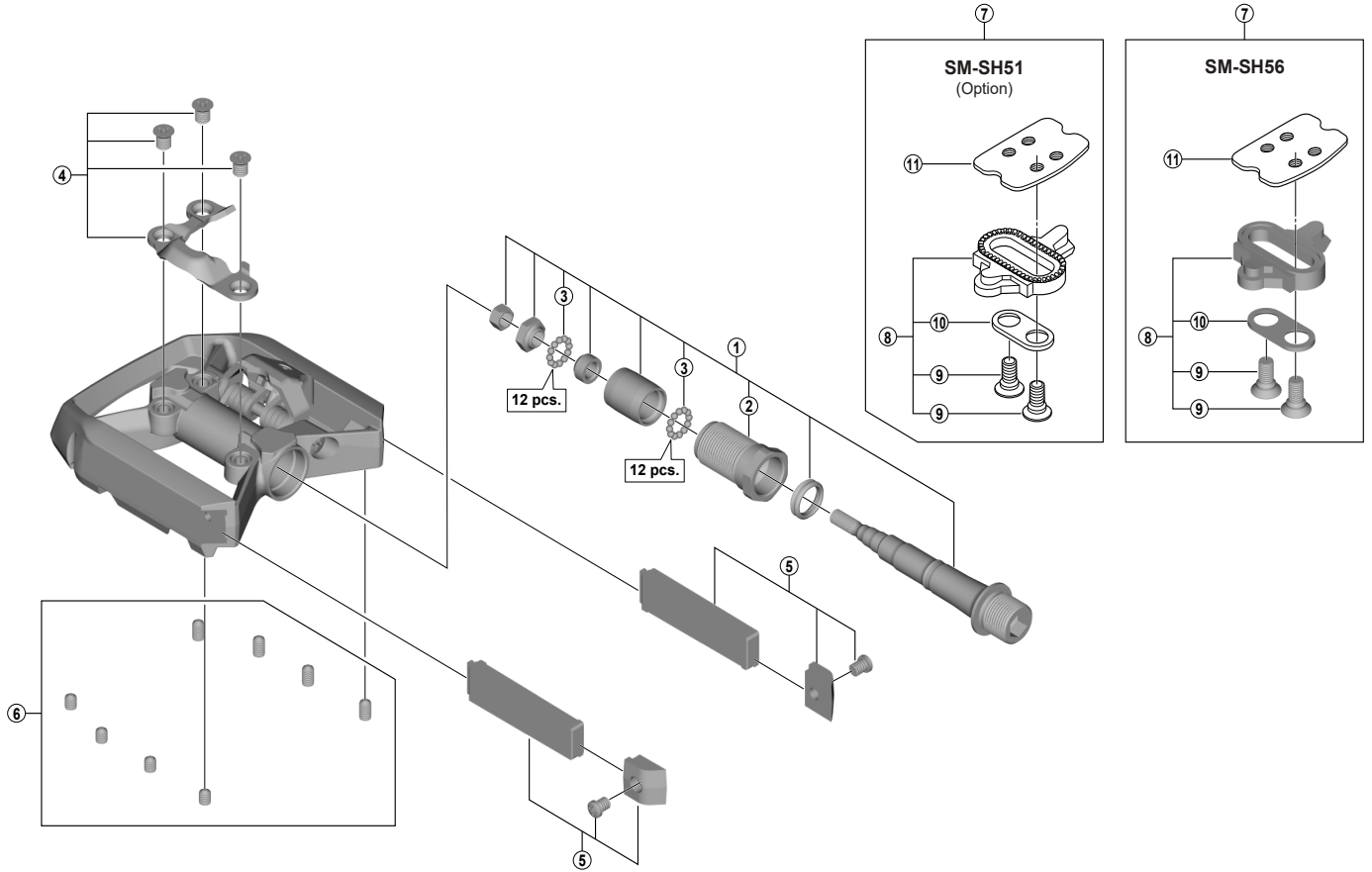


DEORE XT SPD/Flat Pedals

PD-T8000



ITEM NO.	SHIMANO CODE NO.	DESCRIPTION	INTERCHANGEABILITY	
			PD-T780	PD-M8000
* 1	Y46L98030	Pedal axle assembly (right / B.C.9/16" x 20T.P.I.)	B	A
* 1	Y46L98020	Pedal axle assembly (left / B.C.9/16" x 20T.P.I.)	B	A
2	Y45E98030	Lock bush (right)	A	A
2	Y45E98040	Lock bush (left)	A	A
3	Y41N98030	Steel ball (3/32") 62 pcs.	A	A
4	Y46K98030	Body cover (right) and fixing screws (M5)	A	A
4	Y46K98040	Body cover (left) and fixing screws (M5)	A	A
5	Y46P98030	Reflector unit	A	
* 6	YL8498050	Pins (S-size / 8 pcs.)		
* 6	YL8498060	Pins (L-size / 8 pcs.)		
* 7	ISMSH51A	SM-SH51 Cleat set (single release mode / pair)	A	A
* 7	ISMSH56A	SM-SH56 Cleat set (multiple release mode / pair)	A	A
* 8	ISMSH51	SM-SH51 Cleat set without cleat nut (single release mode / pair)	A	A
* 8	ISMSH56	SM-SH56 Cleat set without cleat nut (multiple release mode / pair)	A	A
9	Y41704030	Cleat fixing bolt (1 pc.)	A	A
10	Y42423000	Cleat adapter (1 pc.)	A	A
11	YL0E04000	Cleat nut (1 pc.)	A	A

A: Same parts.

B: Parts are usable, but differ in materials, appearance, finish, size, etc.

Absence of mark indicates non-interchangeability.

Specifications are subject to change without notice.

Nov.-2022-4032A

© Shimano Inc. I

SHIMANO