



SPARK MY22

MANUAL



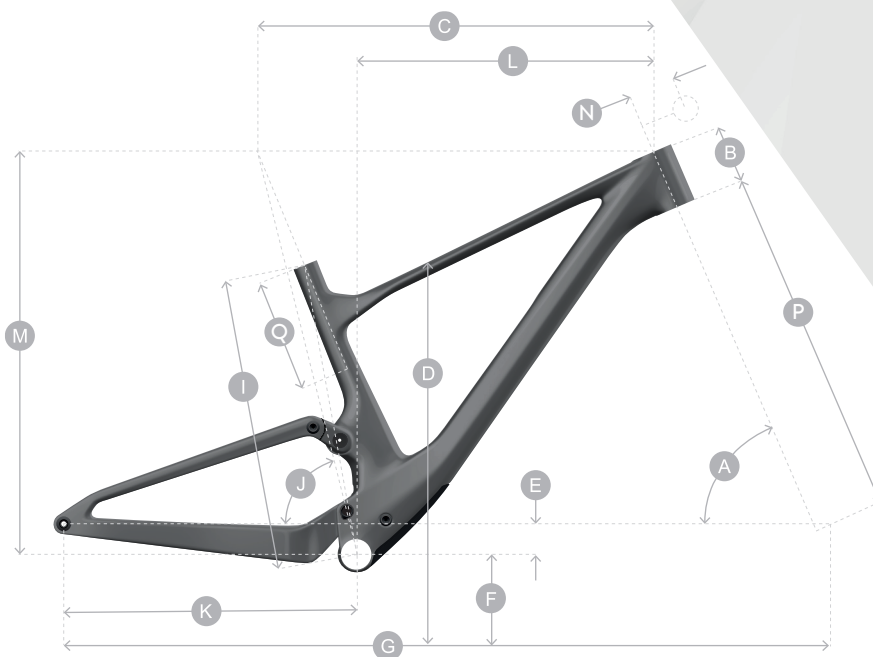
Technical Data:

Seatpost:	31.6mm
Seatpost Clamp:	34.9mm
Travel:	Rear 120mm Front: RC 120mm Non RC 130mm
Shock Length:	165mm
Shock Stroke:	45mm
Hardware M/Frame:	Trunnion
Hardware Linkage:	20mm Bush x 10mm Bolt
BB Housing:	92x41mm
Chainring Max:	38 Tooth
Chain Line:	55mm
Tyre Width Max:	2.4 Inches



Tyre sizes often vary from brand to brand. Always ensure the frame, linkage & swingarm tyre clearance is adequate when replacing the rear tyre.

Geometry:



MY22 RC // +0,6° head cup //
120mm fork

	Small	Medium	Large	X/Large
A HEAD TUBE ANGLE	67.2°	67.2°	67.2°	67.2°
B HEAD TUBE LENGTH	90 mm	90 mm	105.0 mm	115.0 mm
C TOP TUBE HORIZONTAL	562 mm	590 mm	614 mm	642 mm
D STANDOVER HEIGHT	758 mm	765 mm	776 mm	799 mm
E BB OFFSET	-45 mm	-45 mm	-45 mm	-45 mm
F BB HEIGHT	330 mm	330 mm	330 mm	330 mm
G WHEEL BASE	1,129 mm	1,159 mm	1,190 mm	1,231 mm
I BB CENTER TO TOP OF SEATTUBE	415.0 mm	440.0 mm	490 mm	540 mm
J SEAT ANGLE	75.9°	76.1°	76.6°	76.9°
K CHAINSTAY	437.5 mm	437.5 mm	437.5 mm	437.5 mm
L REACH	411 mm	441 mm	471 mm	501 mm
M STACK	602.5 mm	602.5 mm	616 mm	625 mm
N STEM LENGTH	50 mm	60 mm	70 mm	80 mm
P FORK LENGTH	530 mm	530 mm	530 mm	530 mm
Q MAX POST INSERTION	150 mm	175 mm	225 mm	275 mm
CRANK LENGTH	170 mm	175 mm	175 mm	175 mm

MY22 900 // -0,6° head cup //
130mm fork

	Small	Medium	Large	X/Large
A HEAD TUBE ANGLE	65.8°	65.8°	65.8°	65.8°
B HEAD TUBE LENGTH	90 mm	90 mm	105 mm	115 mm
C TOP TUBE HORIZONTAL	561 mm	589 mm	613 mm	641 mm
D STANDOVER HEIGHT	759 mm	767 mm	778 mm	801 mm
E BB OFFSET	-43.5 mm	-43.5 mm	-43.5 mm	-43.5 mm
F BB HEIGHT	331.5 mm	331.5 mm	331.5 mm	331.5 mm
G WHEEL BASE	1,145 mm	1,174 mm	1,205 mm	1,236 mm
I BB CENTER TO TOP OF SEATTUBE	415mm	440 mm	490 mm	540 mm
J SEAT ANGLE	75.7°	75.9°	76.4°	76.7°
K CHAINSTAY	437.5mm	437.5mm	437.5mm	437.5mm
L REACH	410 mm	440 mm	470 mm	500 mm
M STACK	607.5	607.5	617.7 mm	627 mm
N STEM LENGTH	50 mm	60 mm	60 mm	70 mm
P FORK LENGTH	540 mm	540 mm	540 mm	540 mm
Q MAX POST INSERTION	150 mm	175 mm	225 mm	275 mm
CRANK LENGTH	170 mm	175 mm	175 mm	175 mm

PLEASE TAKE NOTE OF THE BELOW ICONS THROUGHOUT THIS MANUAL FOR SAFE PRACTISE.



EASY TECHNICAL STEP



IMPORTANT TECHNICAL STEP



NO GREASE

WITH GREASE



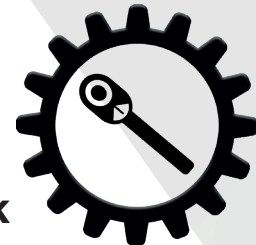
THREADLOC

BEARING FIT



WARNING/CAUTION

TORQUE CHECK



Hangers & Axles:

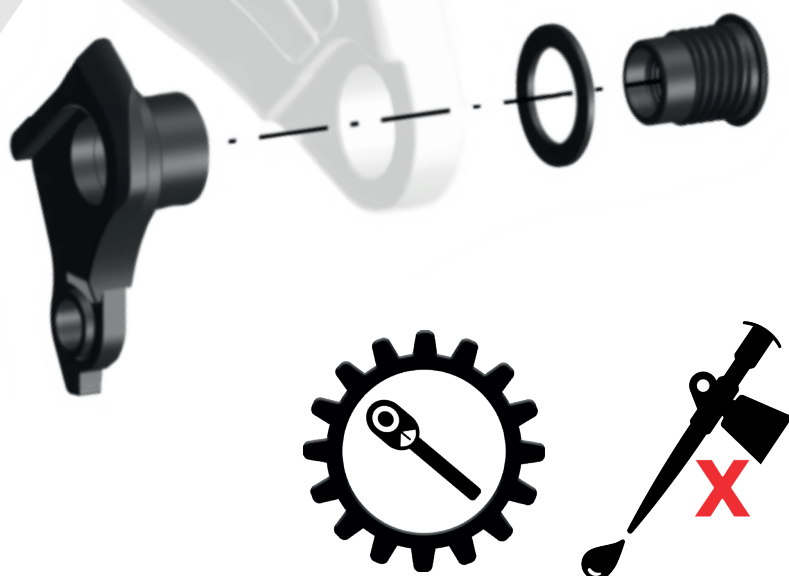
The Spark has only one rear hanger, this is the SRAM UDH.

This is available from your SRAM agent, also available via an Authorised Scott Dealer.

286000 - SCO Dropout Sram UDH 21



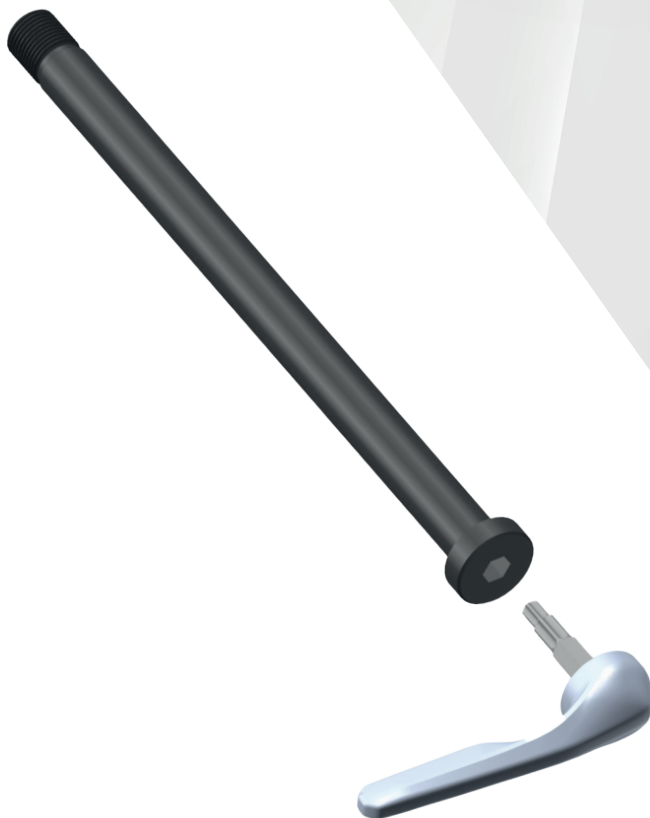
The UDH must be assembled without grease to a torque of 25Nm reverse thread



The new rear axle is specific for the Spark and contains a “plug in” tool containing T30/T25 and M6 Hex key:

290016 - SCO Axle RWS Rear 148x12 Spark Plug 22

The Axle must be assembled with grease, and torqued to 10Nm.



Rear Brake Mounting:

The brake calliper mount is a standard post mount with a specific adaptor for the Spark, this is available in 160 and 180mm only. (No live valve option).

290010 - SCO Brake Mount Spark 22

The 180mm mount will need conical washers, as in previous years.



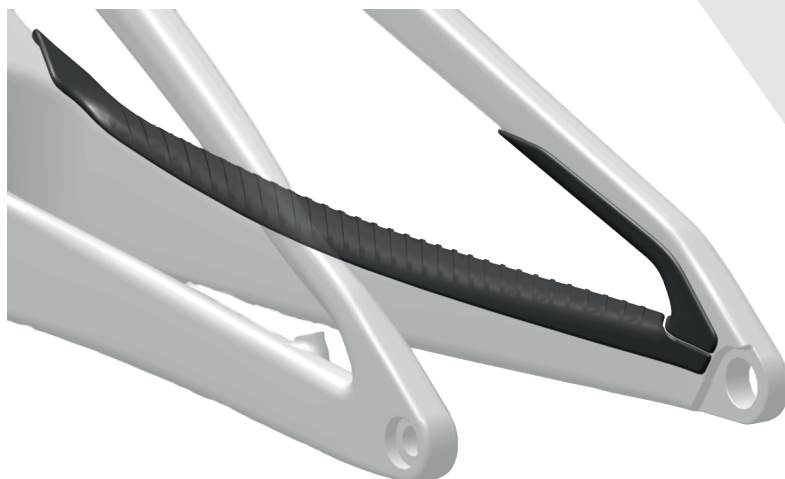
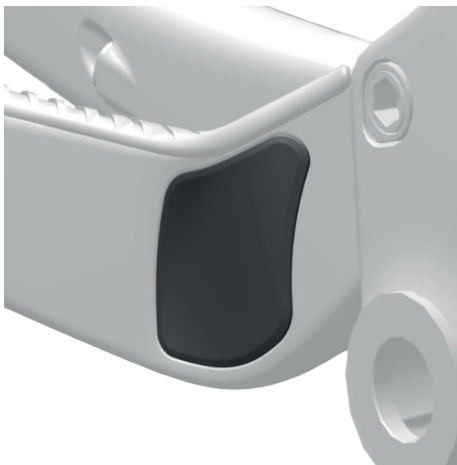
Chain Protectors:

The Chainstay Protectors will come in two options:

290017 - SCO Chainsuck Protector Spark 22

288539 - SCO CS/SS Protector Glue Spark CB 22

288540 - SCO CS/SS Protector Glue Spark AL 22



Maximum Seatpost Insertion:

Please observe the maximum seatpost insertion, there is no stopper inside the frame.

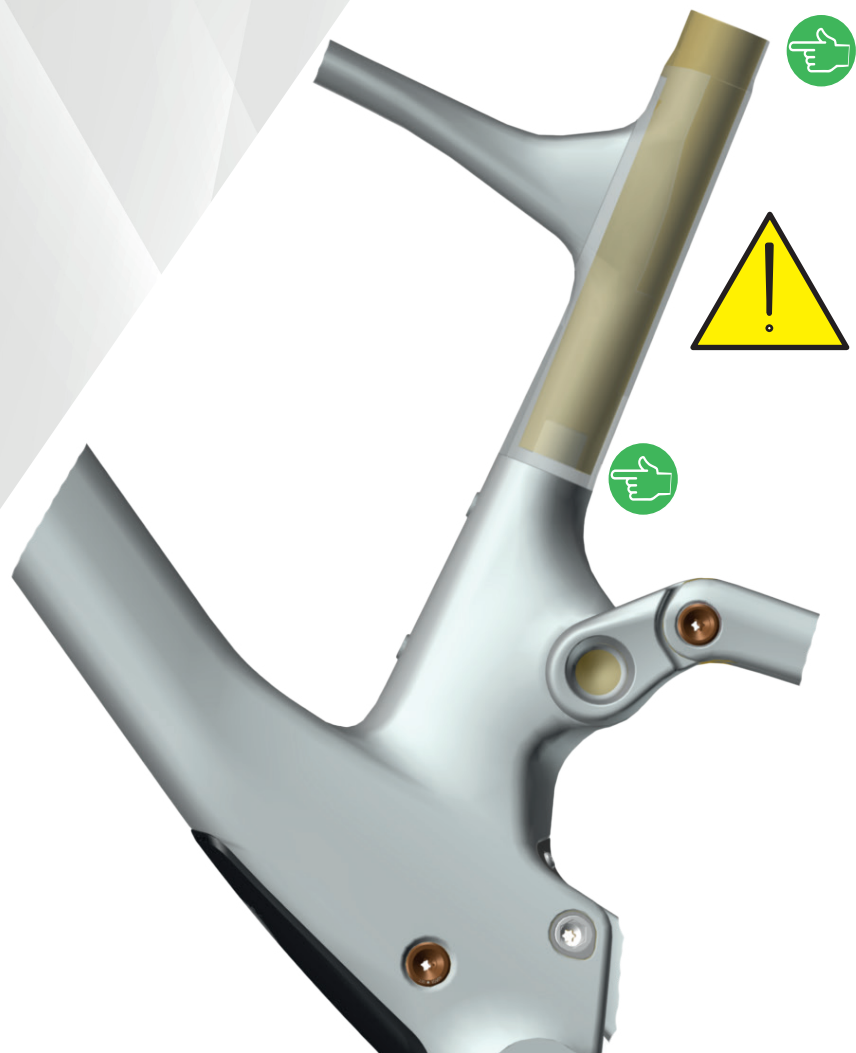
This is size specific:

Small: 150mm

Medium: 175mm

Large: 225mm

XLarge: 275mm



Headset:

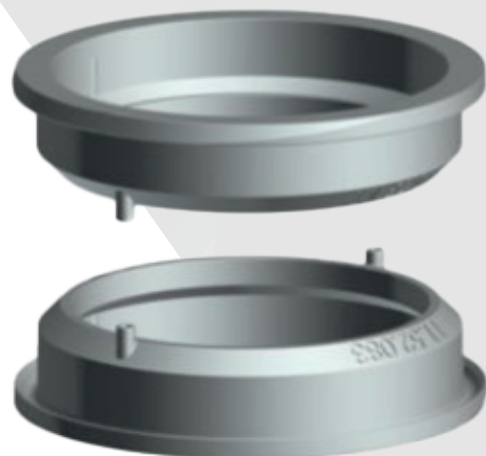
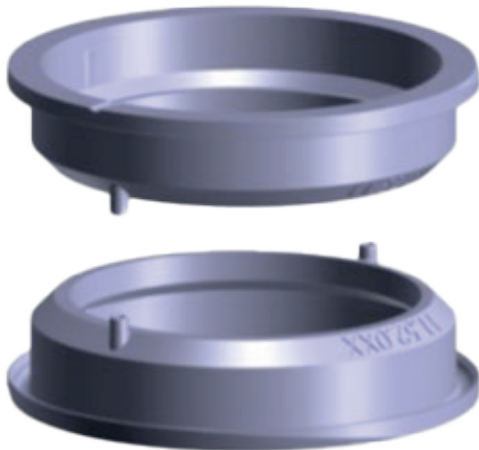
The Spark headset is unique, it has several set up variables:

288251 - SYN Headset ZS56/28.6 - ZS56/40 MTB
This will be bearing, crown race, and compression ring!

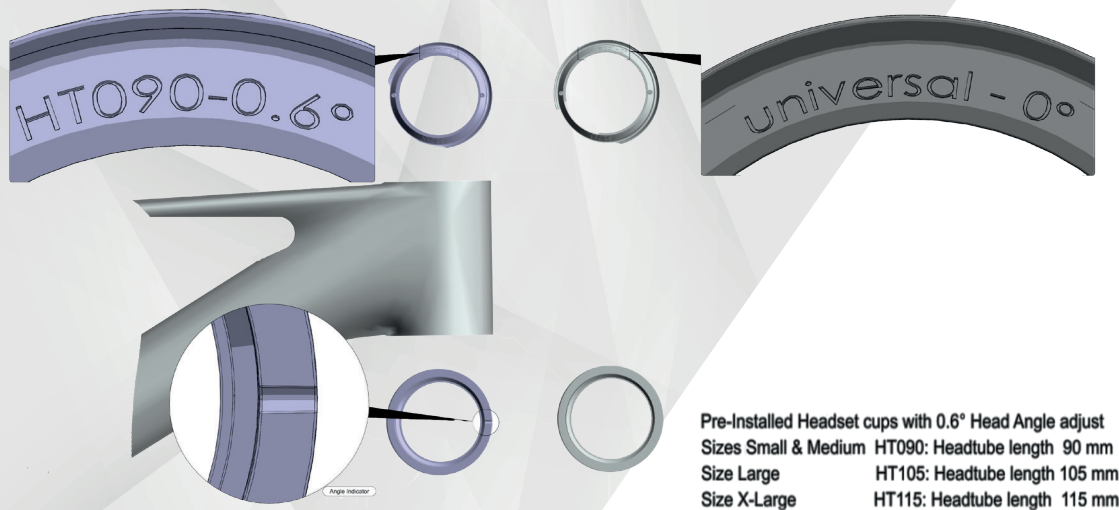
290060 - SCO Headset Cup Kit Spark 22
This will include two cups of 0 degree & 0.6 degree. Size Specific



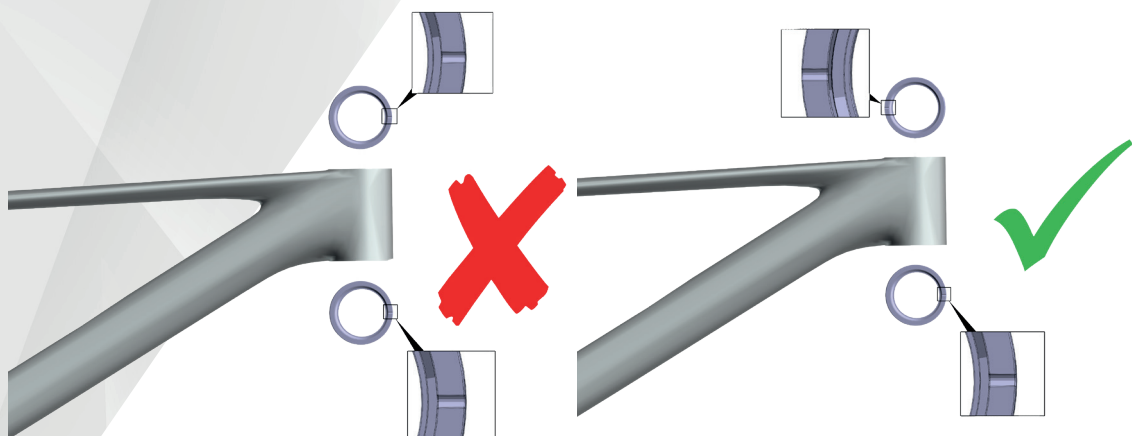
Do not use a standard Headset Removal Tool to remove the cups.



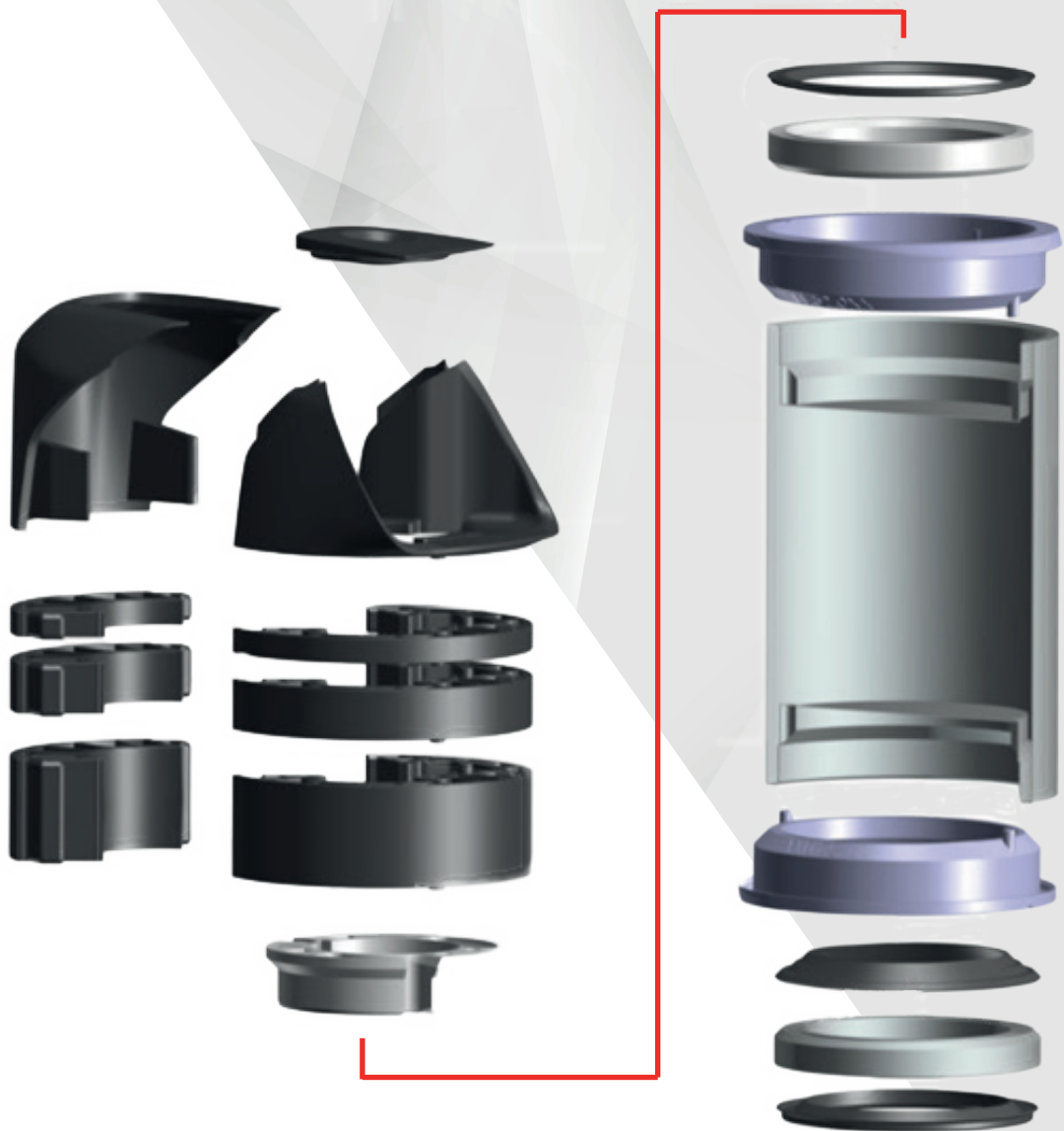
Headset indication and orientation, it is important to have the headset installed correctly depending on the setup. There are two types, 0° and 0.6°, these can be identified from the stamp on the inner surface of the headset cup.



For 0.6° this can be installed at + or - but it is essential that the angle indication markers on the headset are set opposite to each other, top facing forward and bottom facing backwards (or vice versa).



The headset assembly must follow the below no matter which bar/stem system is being used.



There are three separate Stem Spacer Kits & one Headset Spacers Kit:

290059 - SCO Stem Spacer/top cap SY MTB XC 22

290057 - SCO Stem Spacer/top cap SY MTB Combo 22

290058 - SCO Stem Spacer/top cap SY MTB DC 22

The Headset Spacer Kit will contain 3 x 5mm, 2 x 10mm, 1 x 20mm Spacers:

290056 SCO - Headset Spacer Kit IC MTB 22



Cable Guides & Covers:

The MY22 Spark's cable routing is all internal, the follow guides & covers are available:

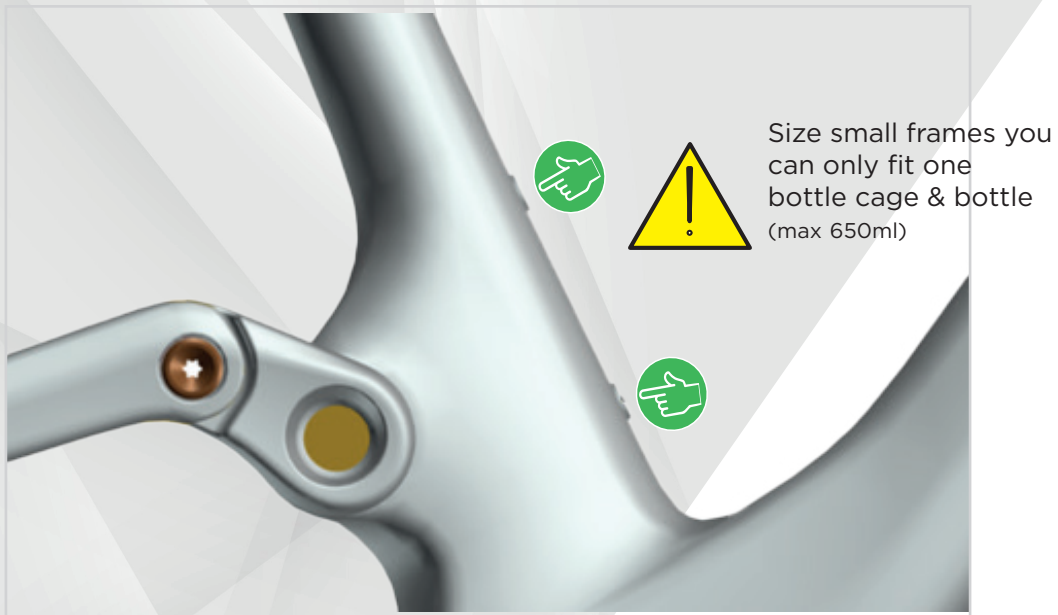
290021 - SCO Cable/Shock DT Cover Spark 22

290054 - SCO Handlebar Cableguide Kit MTB IC 22

290020 - SCO Cableguide & BB Cover Spark 22



Please be aware that the maximum bolt length for the bottle cage on the seat tube is 10mm. The rivet nuts have closed ends, and using a longer bolt may result in damage to the frame.



If you are unsure of any of the following steps please take your bike to an Authorised Scott Dealer for assistance. Do not try to undertake the work yourself as this could cause damage to your bike, and may cause an accident if incorrectly assembled/dis-assembled or set-up is followed.

Basic Shock Pump Set -Up:

A Scott Shock pump has a special valve head and the following steps should be followed to make sure the correct pressure is applied.

Please note the air will flow into the hose and gauge when counterchecking the air pressure. This will give the appearance that the shock has less air pressure, your shock may need to be adjusted.

Please also note that the indicators of shock pumps have a tolerance of max. 10%.

To access the shock first remove the cover.



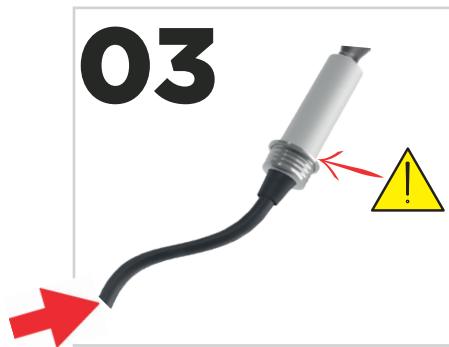
Please follow the below steps depending on which shock pump type you have.
5 step or second 3 step.



Attach the upper shock pump head to the shock valve, making sure the lower part of the pump head stays in the lower position.

Do not screw upwards together.

Then screw the lower pump head up to the base of the upper shock pump head.



Make sure there is no gap between the two shock pump heads. Then pump the air to the required pressure.

Once the required pressure has been reached, unscrew the lower shock pump head first. Making sure the upper part stays in position.

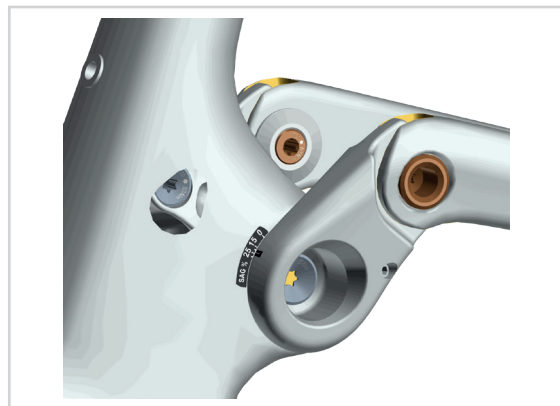
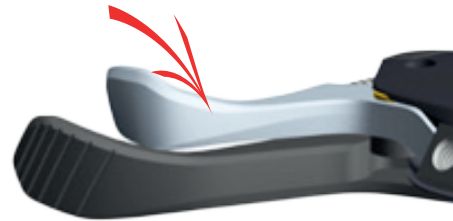


Unscrew the upper shock pump head from the shock valve.



Sag:

1. Make sure before any adjustment is made that your shock and forks are in the open position. To do this press the twinloc upper silver lever twice.
2. With the shock pump attached to the rear shock valve, pump your desired pressure into the shock. Once the pressure is achieved, remove the pump. Then slowly compress and decompress your shock through 20% of its travel 10 times. This will equalize the positive and negative air chambers, if needed add or reduce pressure and repeat.
3. Once your desired pressure is reached sit on your bike in your usual riding position (in your riding gear: if you carry a bag/Hydration-system put it on,) don't "bounce" the suspension while doing this, use a wall or a friend for support if needed. Do not sit on your bike with the shock pump attached to the bike.
4. Use the markings indicated in the linkage and front triangle to check your sag position. Adjust the pressure as required for your personal sag setting.
5. Recommended Sag is 20% - 25%



Rebound:

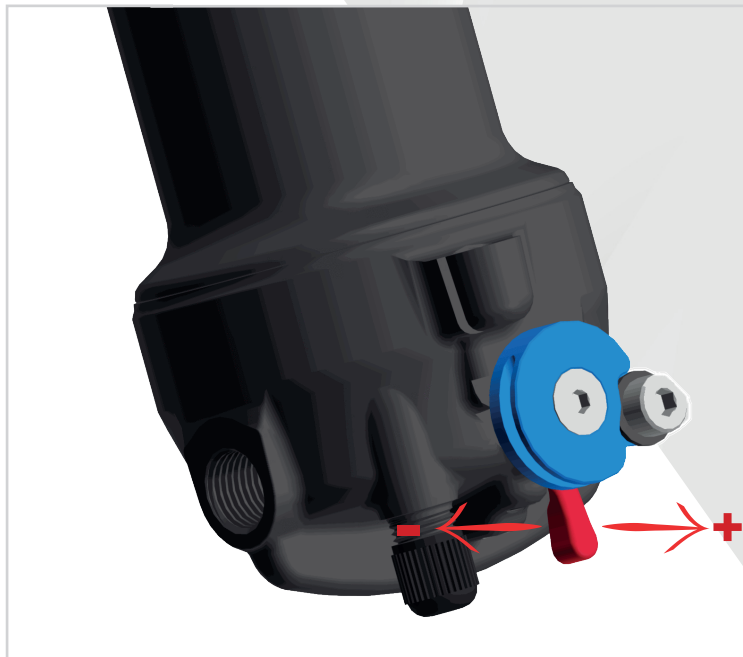
Rebound describes the speed the shock returns back to its original length after absorbing an obstacle, setting of this is very important for the handling and correct function of the bike.

The rebound adjustment lever can be found on the head of the shock.

After the shock pressure/sag is correctly set ride your bike in a safe area with your riding gear/backpack, etc. While remaining in the saddle, ride you bike off a drop/kerb of about 10-15 cm.

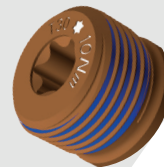
- If it bounces 1-2 times and settles the set-up is good.
- If it bounces more than 3 times the rebound is too fast, turn the knob 1-2 “clicks” clockwise and repeat.
- If there is no bounce the rebound is too slow, turn the knob 1-2 click counter clockwise and repeat.
- Repeat these steps until the desired result is achieved.

Your SCOTT SPARK bike was designed to be used in conjunction with a specific shock and forks, changing the shock or forks on your bike may cause poor/unsafe riding characteristics or damage to frame and components, please consult your SCOTT dealer for any assistance you need, failure to do this may affect your warranty



SHOCK REMOVAL STEPS:

Please take note of the info on each bolt:
(tool type & size, plus torque)



01

Please remove the rear wheel and crankset before starting this process.

Disconnect the seatstay / linkage pivot, removing the bearing spacers.



02

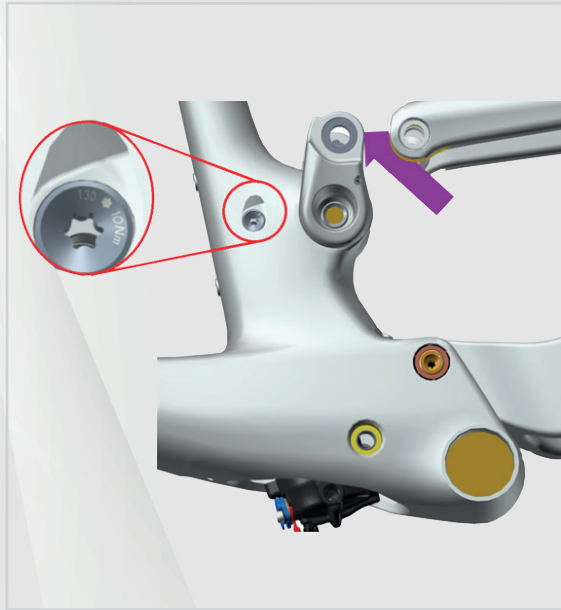
Remove the lower shock cover.





03

Remove the lower shock bolts and disconnect the TC Cable.



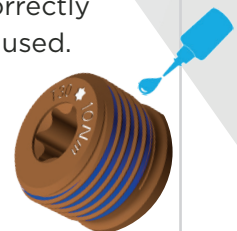
04

Remove the rubber shock bolt cover. Rotate the linkage upwards until the upper shock bolt is visible in the shock window.



05

Remove the shock from the bike. When re-installing the shock please make sure all bolts are correctly torqued and threadloc is used.



CABLE ROUTING:

Rear Derailleur Cable Routing



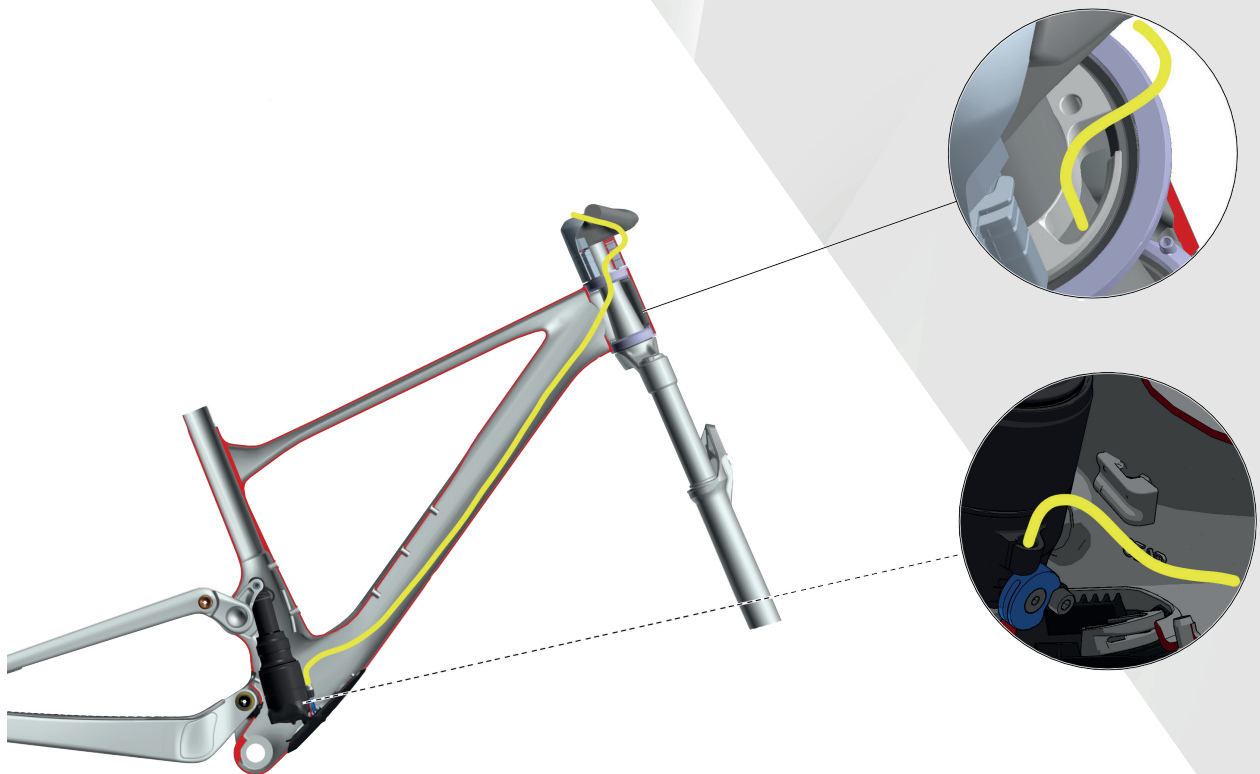
Rear Brake Hose Routing



Dropper Seatpost Routing



Twinloc Routing



GUARANTEE ON SCOTT BIKES

What is covered?

This warranty covers defects in materials and workmanship at the time of transfer of risks in frames, swingarms and forks (provided it is a SCOTT fork) on SCOTT branded bikes sold completely assembled by SCOTT or an authorized SCOTT dealer ("Product").

How long does coverage last?

This voluntary manufacturer's warranty is limited to five years for frames and swingarms, respectively two years for forks, from the date of purchase of the Product and is limited to the first purchaser of the Product and subject to the prior registration of your SCOTT bike on www.scott-sports.com within 10 days as of the date of purchase.

Transfer of the Product from the first purchaser to another person terminates this limited warranty.

The limited warranty of five years for the frames and swingarms shall only be granted in a maintenance service has been effected case once a year according to maintenance requirements as set forth in the manual. The effected annual maintenance service shall be confirmed by stamp and signature. In case such an annual maintenance service has not been effected the warranty of five years for the frame shall be reduced to three years. Costs for maintenance and service have to be borne by the owner of the Product.

On Gambler, Voltage Fr and Volt-X the warranty period is limited to two years.

Repaired or replaced Products are covered for the remainder of the original warranty period and subject to the conditions outlined in the original warranty, to the extent permitted by law.

Hereby SCOTT grants a worldwide voluntarily manufacturer's warranty. To the extent permitted by law and unless a shorter duration is stipulated by law, any warranties implied by law are limited in duration to maximum five, respectively two years, from the date of purchase of the Product and are limited to the first purchaser of the Product.

What will SCOTT do in the event of a guarantee case?

SCOTT will replace the defective product with a product of a quality or nature and similar level, will repair or refund the purchase price (after presentation of the proof of purchase of the product), in its sole discretion. Non-defective components are replaced at your expense. In such a case, we will contact you before replacing the non-defective part for your agreement.

What does this limited warranty not cover?

This limited warranty does not cover defects which did not exist before the transfer of risks. This limited warranty does not cover Products used in rental operations. This limited warranty does not cover purchases of not completely assembled bikes.

This limited warranty does not cover any defect caused by "wear and tear" (a complete list of all parts of "wear and tear" can be found in the manual), accident, neglect, improper handling, colour fade due to exposure to sunlight, abuse, misuse, an act of God, improper assembly, non-compliance with recommended maintenance and care procedures, improper or incorrectly performed maintenance or repairs performed by someone other than an authorized SCOTT dealer, use of parts or devices not consistent with the Product, and

alteration of the Product. All Products come with a manual; please carefully follow the instructions located there or affixed elsewhere to the Product. To the extent permitted by law, consequential and incidental damages are not recoverable under this limited warranty.

How do you make a claim under this limited warranty?

To make a claim under this limited warranty, you must notify SCOTT of the claimed defect within the warranty period and timely return the Product to SCOTT at your expense for inspection. Please contact your authorized SCOTT dealer, call SCOTT's customer service or the national SCOTT distributor (dealer locator: www.scott-sports.com). All returned Products must be accompanied by proof of purchase (receipt) from an authorized SCOTT dealer or this limited warranty will not apply. In case of replacement or refund, the returned Product becomes the property of SCOTT.

A protocol for the handing over of the Product (which you will find at the end of the manual) will remain in copy at the SCOTT dealer after acceptance and signature of the consumer. It is obligatory to show this protocol of handing over together with the defective part in case of a warranty claim given that it provides evidence of purchase or this limited warranty will not apply.

How do state laws affect your rights under this limited warranty?

This limited warranty gives you specific legal rights, and you may also have other rights, which vary from state to state.

Recommendation:

We strongly recommend that you use only authorized SCOTT dealers for yearly maintenance services and for repairs, as improper or incorrectly performed maintenance or repairs voids this limited warranty. Costs for maintenance service have to be borne by the consumer.

SCOTT Bike Warranty Periods					
	Year 1	Year 2	Year 3	Year 4	Year 5
SCOTT Bikes					
Gambler, Voltage FR, Volt-X					
Regular Warranty Period					
Option for prolongation according to maintenance intervals shown in manuals attached to bikes					



All rights reserved ©2021 SCOTT Sports SA



ILLUSTRATIONS

Background: Designed by starline / Freepik



The information contained in this techbook is in various languages but only the English version will be relevant in case of conflict.
Although SCOTT Sports SA has published all information contained in this techbook after careful examination, SCOTT Sports SA assumes no liability for being up-to-date, correct, reliable or complete. SCOTT Sports SA reserves the right to change the content of this techbook, particularly colors, materials and specifications, at any time without prior notice. Any liability shall be exempted.
Products shown may not be available in all regions, please check with your local SCOTT retailer for availability.



EDITOR

SCOTT SPORTS SA
Route du Crochet 11
1762 Givisiez
Switzerland

Authorized Representative: Beat Zaugg, Pascal Ducrot

Tel: +41 (0)26 460 16 16
Fax: +41 (0)26 460 16 00
webmaster.marketing@scott-sports.com
www.scott-sports.com

Commercial register: Fribourg
Register number: CH-217-0135214-3
VAT-ID: CH466324

