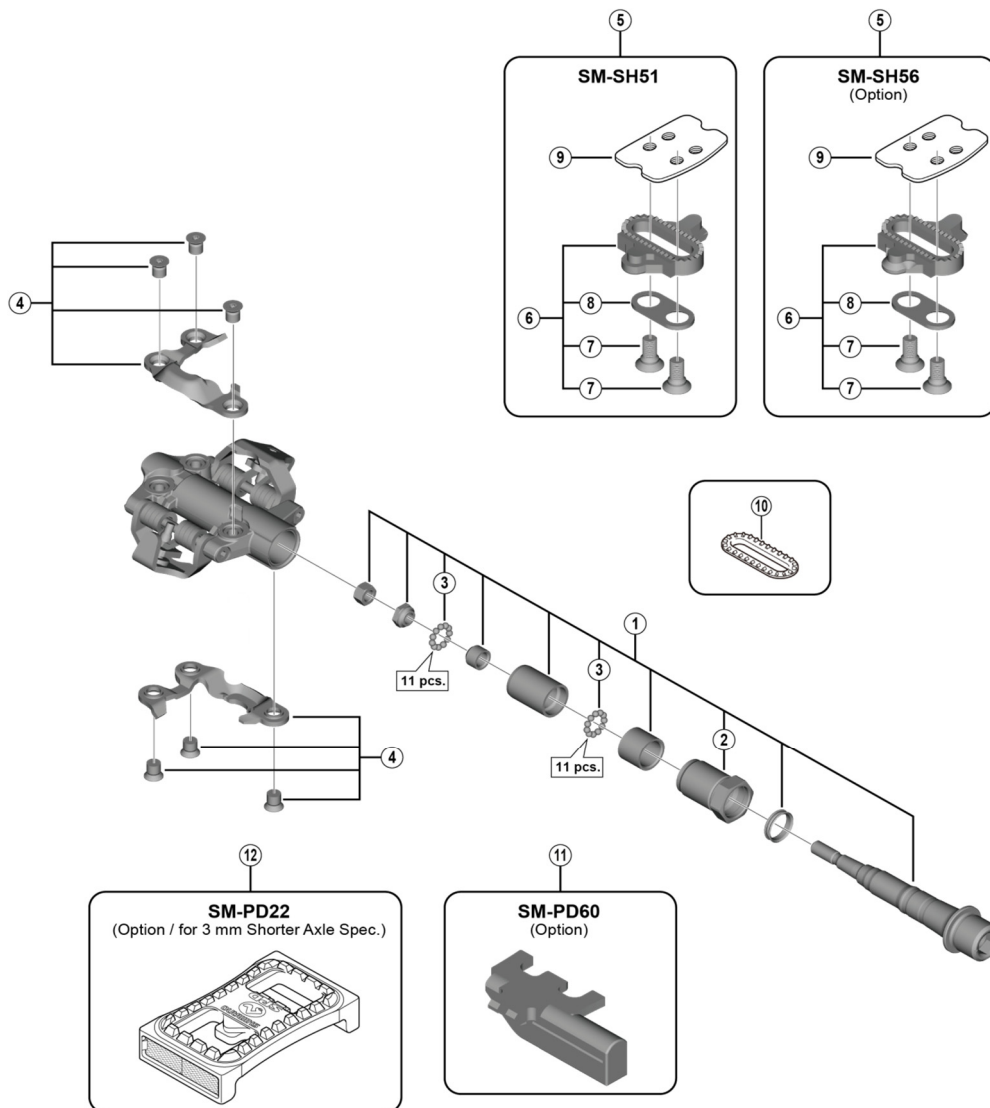


# XTR SPD Pedals PD-M9100



ITEM NO.	SHIMANO CODE NO.	DESCRIPTION
1	YL8D98010	Pedal Axle Assembly (Right / B.C.9/16" x 20T.P.I.)
	YL8D98020	Pedal Axle Assembly (Right / B.C.9/16" x 20T.P.I.) for 3 mm Shorter Axle
	YL8D98030	Pedal Axle Assembly (Left / B.C.9/16" x 20T.P.I.)
	YL8D98040	Pedal Axle Assembly (Left / B.C.9/16" x 20T.P.I.) for 3 mm Shorter Axle
2	YL8D98050	Lock Bolt (Right)
	YL8D98060	Lock Bolt (Left)
3	Y41N98030	Steel Ball (3/32") 62 pcs.
	Y46F98050	Body Cover (Right) & Fixing Bolts (Hexalobular #10)
4	Y46F98060	Body Cover (Left) & Fixing Bolts (Hexalobular #10)
	Y42498220	SM-SH51 Cleat Set (Single Release Mode / Pair)
5	Y41S98092	SM-SH56 Cleat Set (Multiple Release Mode / Pair)
	Y42498201	SM-SH51 Cleat Set w/o Cleat Nut (Single Release Mode / Pair)
6	Y41S98100	SM-SH56 Cleat Set w/o Cleat Nut (Multiple Release Mode / Pair)
	Y41704030	Cleat Fixing Bolt (1 pc.)
7	Y42423000	Cleat Adapter (1 pc.)
8	YL0E04000	Cleat Nut (1 pc.)
9	YL8098030	SPD Cleat Spacer (2 pcs.)
	Y40Z98010	SM-PD60 Reflector Unit (Pair/Option)
10	Y40Z98020	SM-PD60 Reflector Unit (AS/Pair/Option)
	Y41R98070	SM-PD22 Reflector Unit (Pair/Option) for 3 mm Shorter Axle
11	Y45C98040	SM-PD22 Reflector Unit (AS/Pair/Option) for 3 mm Shorter Axle

May-2018-4385  
© Shimano Inc. I

Specifications are subject to change without notice.

# SHIMANO